



南通大学  
NANTONG UNIVERSITY

祈通中西  
力求精進

2019 RECRUITMENT BROCHURE  
FOR INTERNATIONAL STUDENTS









南通大学  
NANTONG UNIVERSITY

新通中西  
力求精進

# CONTENTS

1. About Us .....	1
2. Contact Us .....	2
3. Degree Programs .....	3
1) PhD Programs and Scholarship .....	3
2) Master Programs and Scholarship .....	4-8
3) Bachelor Programs and Scholarship .....	9-10
4. Non-degree Programs .....	11
1) Bridging Course .....	11
2) Language Training Programs .....	11
3) Exchange Programs .....	11
5. Application .....	12
1) Application Procedures .....	12
2) Application Requirements .....	12
3) Application Documents .....	12
4) Instructions on Scholarship Application .....	13
5) Fees .....	13
6) Application Deadline and Registration Time .....	13
6. Dormitory and Campus Facilities .....	14
7. Glimpses of Campus .....	15
8. Appendix: Bridging Course .....	16



# About Us/Contact Us



Founded in 1912, Nantong University (NTU) is a comprehensive university jointly built by the Jiangsu Provincial People's Government and the National Department of Transportation, ranking the top 122 in China University Evaluation of 2019 by the Chinese Academy of Management Sciences and the top 116 in ESI on Comprehensive Ranking of Chinese Universities.

NTU is composed of 20 schools, an independent college (Xinglin College), a large comprehensive and affiliated hospital, School of International Education and School of Extended Education. There are 2 postdoctoral research

centers in Basic Medicine and Clinical Medicine, 3 doctoral degree programs in Basic Medicine, Clinical Medicine, and Information and Communication Engineering, and over 30 master programs. Among them, 3 disciplines of Clinical Medicine, Neuroscience and Behavior, and Engineering rank the top 1% of ESI disciplines in the world. There are 104 undergraduate programs, covering 10 disciplines such as literature, science, engineering, medicine, art, economics, law, education, history and management with more than 38,000 full-time undergraduates, over 2700 postgraduates and over 750 international students. All degree programs are open to the international students. Those who are distinguished stand a great chance to win the scholarships sponsored by the Chinese government, Jiangsu government or Nantong University.

Currently there are 3,154 staff in total, including 1,568 staff with senior professional titles or above, 1,379 doctoral and master tutors, 9 academicians of the Chinese Academy of Sciences and Chinese Academy of Engineering, 1 national famous teacher, and a great number of experts.

NTU has developed extensive overseas exchange and cooperation, established friendly cooperative relations with more than 100 universities and research institutes in more than 20 countries and regions, such as the United States, Canada, Russia, Britain, France, Italy, Germany, Australia and Japan, and has carried out many international exchange projects.

NTU is located in the riverside and coastal Nantong City with the beautiful scenery, and rich human and cultural resources. It is only 2 hours' drive away from Shanghai Pudong International Airport. The University provides students from home and abroad with an excellent study environment and high-quality living facilities. It is a good place for international students to study, live, and make their dreams come true.



School of International Education, Nantong University

■ Address: No.19 Qixiu Road, Chongchuan District,  
Nantong, Jiangsu Province 226001, China

■ Tel: +86-513-85051869

■ Fax: +86-513-85051869

■ E-mail: [admission@ntu.edu.cn](mailto:admission@ntu.edu.cn)

■ Web page: <http://sie.ntu.edu.cn>

Online application:

<https://ntu.17gz.org/member/login.do>



# Degree Programs

## PhD Programs

**Programs** (Duration: 4 Years; Language of Instruction: English or Chinese)

	Program Name and Research Area	
100200 Clinical Medicine	100201 Internal Medicine——Basic and Clinical Research on Internal Disease Clinical and Basic Study on Rheumatism/ Pathogenesis and Clinical Diagnosis and Treatment of Aplastic Anemia/ Basic and Clinical Research on Lymphoma/ Basic and Clinical Study on Pancreatic Diseases/ Mechanism and Prevention of Renal Injury	
	100204 Neurology——Basic and Clinical Research on Neurological Diseases Basic and Clinical Study on Nerve Regeneration and Repair of Central Nervous System/ Basic and Clinical Study of Epilepsy	
	100210 Surgery——Basic and Clinical Research on Surgical Diseases Functional Restoration of Hand Injuries/ Ischemic Heart Disease and Myocardial Remodeling/ Basic and Clinical Study of Thoracic Tumors/ Clinical and Basic Study of Hepatobiliary Surgery-Related Diseases/ Basic and Clinical Study of Joint Surgery-Related Diseases/ Clinical and Basic Research on Male Infertility/ Diagnosis and Treatment of Spinal and Spinal Cord Injury/ Treatment of Severe Burns and Study & Application of Materials for Wound Healing	
	100214 Oncology——Basic and Clinical Study of Malignant Tumors Diagnosis and Treatment of Gynecological Tumors/ Early Diagnosis of Tumors	
	1001 Basic Medicine	Tissue Engineering and Nerve Regeneration/ Effects and Intervention of Special Environment on Human Physiology and Psychology/ Regulation of Stem Cell Differentiation/ Study on Immune Regulatory Mechanism/ Pathological Mechanism and Prevention of Senile Diseases/ Molecular Mechanism of Male Infertility
	081000 Information and Communication Engineering	Wireless Communication and Network System/ Traffic Communication System and Its Application Specific Integrated Circuit/ Nonlinear Signal Processing/Information Acquisition and Processing/ Medical Information Technology

## Scholarship

### • Chinese Government Scholarship

Type: **full scholarship** covering tuition fee, accommodation fee, insurance  
and 3000 CNY monthly stipend

Application time: from **January to April**

Online application: <http://www.campuschina.org/>

### • Nantong University Scholarship

Type: **full scholarship** covering tuition fee, accommodation fee  
and 3000 CNY monthly stipend

Application time: from **March to June**

Online application: <https://ntu.17gz.org/member/login.do>

# 2019 RECRUITMENT BROCHURE FOR INTERNATIONAL STUDENTS

## Master Programs

### Master Programs (Academic) (Duration: 3 Years)

School Name	Program Name and Research Area	Language of Instruction
School of Humanities	050100 Chinese Language and Literature Study of Art and Literature/ Linguistics and Applied Linguistics/ Classical Chinese and Chinese Philology/ Chinese Classical Philology/ Ancient Chinese Literature/ Modern and Contemporary Chinese Literature/ Comparative Literature and World Literature	Chinese
School of Science	070100 Mathematics Algebra and Combination/ Partial Differential Equation/ Operations Research and Control/ Analytical Theory and Its Application/ Statistics and Its Application/ Optimization Theory and Its Application	English or Chinese
	070200 Physics Theoretical Physics/ Optics/ Atomic and Molecular Physics/ Condensed Matter Physics	
School of Economics and Management	120404 Social Security Social Security Theory and System/ Social Policy and Social Work	English or Chinese
	020200 Applied Economics Regional Economics/ Finance/ Industrial Economics/ International Trade/ Labor Economics	Chinese
School of Education	040105 Pre-school Education	English or Chinese
	040106 Higher Education	
	040108 Vocational Technology Education	
	040110 Educational Technology	
	0401Z1 Psychological Education	
School of Foreign Studies	050201 English Language and Literature British and American Literature/ English Culture and Translation/ English Linguistics	English
	050211 Foreign Linguistics and Applied Linguistics Foreign Linguistics/ Study on Applied Linguistics and Foreign Language Teaching/ Japanese Language and Culture	
School of Life Science	071001 Botany Environmental Botany/ Plant Genetics/ Microbial Transformation of Plant Active Substances	English or Chinese
School of Mechanical Engineering	080200 Mechanical Engineering Heavy Equipment Manufacturing and New Technology of Special Processing/ New Material and Its Preparative Technique/ Vehicle Electronics and New Energy Technology/ Mechatronics Equipment and Its Measurement and Control Technology/ Modern Machinery Design Theory and Technology/ CAD and Virtual Machinery Design Technology	English or Chinese
School of Information Science and Technology	081000 Information and Communication Engineering Broadband Wireless Communication Theory and Technology/ Wireless Communication Network and System/ Radio Frequency Communication Circuits and Systems/ Network and Information Security/ Multimedia Signal Processing/ Nonlinear Signal Processing/ Biological Signal Acquisition and Information Processing/ Digital-Analog Hybrid Integrated Circuits and Integrated Systems/ Design and Test of Large-Scale Digital Integrated Circuits/ Theory and Technology of Optical Mobile Communication/ Artificial Intelligence/ Big Data/ Future Mobile Communication/ Mobile Cloud Computing and Data Mining	English or Chinese
School of Electrical Engineering	081100 Control Science and Engineering New Motor Control Theory and Technology/ New Energy System and Analysis/ Theory and Application of System Optimization and Control/ Intelligent Computing and Pattern Recognition	English or Chinese



# Degree Programs

School Name	Program Name and Research Area	Language of Instruction
School of Textile and Clothing	<b>082101 Textile Engineering</b> Preparation and Modification of Fiber Materials/ Development and Application of Technical Textiles	Chinese
	<b>082103 Textile Chemistry and Dyeing and Finishing Engineering</b> Environment-friendly Dyeing, Finishing, Processing and Product Research and Development/ Research and Development of New Textile Chemicals	
	<b>082104 Apparel Designing and Engineering</b> Functional Clothing and Ergonomics/ Applied Technology of Functional Clothing	
School of Medicine (School of Nursing)	<b>071003 Physiology</b> Basis and Clinic of Endocrine Immune Regulation/ Basis and Clinic of Neuroimmune Regulation	English or Chinese
	<b>100101 Human Anatomy &amp; Histoembryology</b> Neural Injury and Repair/ Central Nervous Development and Regeneration/ Differentiation of Neural Stem Cells/ Cell Differentiation	
	<b>100102 Immunology</b> Tumor Immunity/ Anti-infection Immunity/ Autoimmunity	
	<b>100103 Pathogenic Organisms</b> Infection and Inflammatory Reaction/ Molecular Immunoparasitology/ Medical Molecular Virology	
	<b>100104 Pathology &amp; Pathophysiology</b> Tumor Pathology/ Molecular Pathology/ Pathology of Common Diseases/ Mechanisms of Epithelial Cells -Mesenchymal Transformation/ Neurological Injury and Neuroinflammation/ Stem Cell Bioengineering	
	<b>100105 Forensic Medicine</b> Forensic Pathology (Traumatic Biology)	
	<b>100106 Radiation medicine</b> Basis and Clinic of Precise Radiotherapy for Tumors	
	<b>1001Z1 Medical Informatics</b> Resident Electronic Health Record System/ Medical Image Processing/ Medical Information Resource Service Mode/ Medical Natural Language Processing	
	<b>1001Z2 Medical Biochemistry and Molecular Biology</b> Mechanism and Prevention of Neurodegenerative Diseases/ Molecular Mechanism of Hepatic Fibrosis and Its Prevention/ Biochemical Toxicology	
	<b>1001Z3 Reproductive Medicine</b> Molecular Mechanism of Infertility	
	<b>100201 Internal Medicine</b> Digestive System Diseases (Study on Diagnosis and Treatment of Digestive System Diseases, Liver Enzymatic Diagnosis and Study of Hepatocellular Carcinoma Epitopes, Study on Diagnosis and Treatment of Pancreatic Diseases)/ Blood Disease (Hemorrhagic and Thrombotic Diseases, Postoperative Mechanism of Aplastic Anemia, Leukemia)/ Cardiovascular Diseases (Cardiomyopathy, Arrhythmia, Coronary Heart Disease)/ Nephropathy (Renal Glomerular Disease, Chronic Renal Failure)/ Respiratory Diseases (Diagnosis of Pulmonary Function, Diagnosis and Treatment of Pulmonary Hypertension)/ Infectious Diseases (Clinical and Experimental Study of Viral Hepatitis, Infection and Immunity)/ Endocrine and Metabolic Diseases (Diabetes Mellitus)/ Rheumatic Immunity (Systemic Lupus Erythematosus, Rheumatoid Arthritis, Autoimmune Disease)	
<b>100202 Pediatrics</b> Infectious Diseases/ Cardiovascular Diseases/ Development and Brain Protection/ Child Health Care		
<b>100204 Neurology</b> Basis and Clinic of Cerebrovascular Disease/ Neuropsychological Research/ Study on the Nosogenesis of Epilepsy/ Basis and Clinic of Stem Cell Therapy for Neurological Diseases		
<b>100206 Dermatology and Venereology</b> Skin Pathology/ Skin Tumors/ Experimental Study of Venereal Disease/ Skin Surgery		





## 2019 RECRUITMENT BROCHURE FOR INTERNATIONAL STUDENTS

School Name	Program Name and Research Area	Language of Instruction
School of Medicine (School of Nursing)	<b>100207 Imaging and Nuclear Medicine</b> Central Nervous System: Functional Brain Imaging and Molecular Imaging of Brain Tumors/ Imaging Study of Cerebrovascular Lesions/ Cardiovascular System: Imaging Study of Coronary Artery Lesions/ Digestive System: Imaging Study of Hepatic Vascular Lesions/ Study on Interventional Therapy of Tumors and Application of Percutaneous Vertebroplasty/ Medical Image Processing and Diagnosis	English or Chinese
	<b>100208 Clinical Laboratory Diagnostics</b> Laboratory Diagnosis of New Technology/ Molecular Diagnosis/ Immunological Test/ Standardization of Clinical Laboratory Test	
	<b>100210 Surgery</b> General Surgery (Study of Hepatobiliary and Pancreatic Diseases and Gastrointestinal Tumors)/ Orthopaedic Surgery (Joint, Peripheral Nerve, Spinal Disease, Traumatic Surgery) / Hand surgery ( Kinematics of Wrist Joint and Tendon Repair)/ Neurosurgery (Deep Brain Tumors, Cerebrovascular Diseases, Embryonic Brain Transplantation, Spinal Cord Injury and Repair)/ Cardiothoracic Surgery (Neuroendocrine of Lung Cancer, Myocardial Protection in Cardiac Surgery)/ Burn and Plastic Surgery (Wound Repair, Tissue Engineering)/ Pediatric Surgery (Pediatric Congenital Diseases)/ Urinary Surgery	
	<b>100211 Obstetrics and Gynecology</b> Gynecologic Tumor/ Perinatal Medicine/ Reproductive Medicine	
	<b>100212 Ophthalmology</b> Molecular Biological Study of Ophthalmopathy/ Basic and Clinical Study of Retinopathy/ Study on the Preventive treatment of Cataract and Glaucoma/ Study on Corneal Diseases and Corneal Refractive Surgery/ Basic and Clinical Study of Ocular Trauma	
	<b>100213 Otolaryngology</b> Clinical Application and Basic Research of Rhinology/ Clinical Application and Basic Research of Otolaryngology/ Study on the Preventive treatment of Head and Neck Tumors	
	<b>100214 Oncology</b> Tumor Radiotherapy Research/ Tumor chemotherapeutics/ Oncomolecularebiology/ Oncopathology/ Tumor Immunology/ Tumor Microenvironment and Early Diagnosis	
	<b>100215 Rehabilitation Medicine and Physical Therapy</b> Rehabilitation of Dyskinesia/ Rehabilitation of Neurological Diseases/ Acupuncture Rehabilitation of Spinal-Related Diseases/ Rehabilitation of Nephropathy by Traditional Chinese Medicine	
	<b>100217 Anesthesiology</b> Study on Analgesic Mechanism/ Function Protection of Organs/ Study on Obstetric Anesthesia	
	<b>100218 Emergency Medicine</b> Basis and Clinic of Cardiopulmonary Cerebral Resuscitation/ Basis and Clinic of Multiple Organ Failure/ Basis and Clinic of Trauma and Shock	
	<b>100222 Humanistic Medicine</b> Bioethics/ Medical Psychology/ Study on Health and Medical Sociology	
<b>101000 Medical Technology</b> Medical Laboratory Technology/ Medical Imaging Technology/ Ophthalmological Examination and Treatment		
<b>100221 Emergency and Critical Care Nursing</b> Clinical Nursing/ Community Nursing		
School of Public Health	<b>100400 Public Health and Preventive Medicine</b> Hygienic Laboratory/ Social Medicine and Health Care Management	English or Chinese
	<b>100401 Epidemiology &amp; Health Statistics</b>	
	<b>100402 Occupational and Environmental Health</b>	
	<b>100403 Nutrition and Food Hygiene</b>	
School of Sports Science	<b>040300 Sports Science</b> Physical Education Training/ Sociology of Sports Humanities/ Human Movement Science/ National Traditional Sports	English or Chinese

# Degree Programs

School Name	Program Name and Research Area	Language of Instruction
School of Art (School of Architecture)	130400 Study of Fine Arts Chinese Painting/ Oil Painting/ Sculpture/ Art Education	English or Chinese
School of Transportation and Civil Engineering	081400 Civil Engineering Civil Engineering Construction and Management/ Civil Engineering Materials	English or Chinese
	081403 Municipal Engineering Water Environment Assessment/ Diagnosis and Treatment of Urban Water and Soil Pollution	
School of Pharmacy	100700 Pharmacy Pharmacology/ Pharmaceutics/Pharmaceutical Chemistry/ Clinical Pharmacy/ Microbiology and Biochemical Pharmacy	English or Chinese
Department of Neuroscience	071000 Biology Neural Injury and Repair/ Protein Function Regulation and Nerve Regeneration/ Stem Cell Biology/ Glial Cell Biology/ Genetics and Diseases/ Molecular Genetics/ Pathological Mechanism of Neurodegenerative Diseases/ Study of RNA Metabolism and Related Diseases/ Laboratory Animal Breeding and Disease Animal Model/ Natural Products and Regulation of Differentiation of Animal Stem Cells	English or Chinese
Department of Naval Medicine	100900 Special Medicine Nautical and Diving Diseases/ Hypoxic Injury and Protection/ Sports Injury and Chronic Pain/ Applied Psychology/ Molecular Pharmacology/ New Drug Formulation	English or Chinese

## Master Programs (Research Area)

School Name	Program Name and Research Area	Duration (Year)	Language of Instruction
School of Economics and Management	025400 International Business Transnational Operation and Management/ International Trade Operation(including cross-border e-commerce)/ International Accounting and Corporate Finance/ International Investment and Financing and Risk Management	2	English or Chinese
School of Education	045114 Modern Teaching Technology	2	English or Chinese
	045116 Mental Health Education		
	045118 Preschool Education		
School of Chemistry and Chemical Engineering	085216 Chemical Engineering Green Chemical Technology/ Advanced Chemical Materials and Technology/ Functional Fine Chemicals/ Chemical Control Technology of Pollutants	3	English or Chinese
School of Information Science and Technology	085211 Computer Technology Software Design and Testing/ Artificial Intelligent and Intelligent System/ Information Security and Network Technology/ Image Processing and Virtual Reality/ Cloud Computing and Big Data Technology/ Internet of Things Technology/ Intelligent Transportation Technology	3	English or Chinese
School of Medicine (School of Nursing)	105101 Internal medicine Digestive System Diseases/ Hematology/ Cardiovascular Diseases/ Nephrology/ Respiratory Diseases/ Epidemiology/ Endocrine and Metabolic Diseases/ Rheumatic Immunity	3	English or Chinese
	105102 Pediatrics		
	105103 Geriatric Medicine		
	105104 Neurology		
	105105 Psychiatry and Mental Health		
	105106 Dermatology and Venereology		



## 2019 RECRUITMENT BROCHURE FOR INTERNATIONAL STUDENTS

School Name	Program Name and Research Area	Duration (Year)	Language of Instruction
School of Medicine (School of Nursing)	105107 Imaging and Nuclear Medicine Imaging Diagnosis/ Intervention/ Ultrasonic Diagnosis/ Nuclear Medicine	3	
	105108 Clinical Laboratory Diagnostics		
	105109 Surgery General Surgery/ Orthopedic Surgery/ Hand Surgery/ Neurosurgery/Cardiothoracic surgery/ Burn and Plastic Surgery/ Pediatric Surgery/ Urinary Surgery		
	105110 Obstetrics and Gynecology		
	105111 Ophthalmology		
	105112 Otorhinolaryngology		
	105113 Oncology Oncology/ Tumor Radiation Therapy		
	105114 Rehabilitation Medicine and Physical Therapy		
	105116 Anesthesiology		
	105117 Emergency Medicine		
	105127 General Practice Training and Research of Clinical Medical Skills in General Medicine		
	105128 Clinical Pathology Training and Research of Clinical Medical Skills in Clinical Pathology		
	105200 Dentistry and Surgery Oral Internal Medicine/ Oral and Maxillofacial Surgery/ Orthodontics		
	105400 Nursing Community Nursing/ Internal Medicine Nursing/ Emergency and Critical Care		
School of Public Health	105300 Public Health	3	English or Chinese
School of Art (School of Architecture)	135101 Music Vocal Singing/ Piano Playing/Chinese Instrumental Playing/ Music Education	3	English or Chinese
	135107 Fine Arts Chinese Painting/ Oil Painting/ Calligraphy		
	135108 Art Design Visual Transmission/ Public Art/ Digital Media Art		
School of Pharmacy	105500 Pharmacy Pharmacology/ Pharmacy/ Clinical Pharmacy	3	English or Chinese

### Scholarship

#### • Chinese Government Scholarship

Type: **full scholarship** covering tuition fee, accommodation fee, insurance and 3000 CNY monthly stipend

Application time: from **January to April**

Online application: <http://www.campuschina.org/>

#### • Nantong University Scholarship

Type: **partial scholarship** covering tuition fee and accommodation fee

Application time: from **March to June**

Online application: <https://ntu.17gz.org/member/login.do>

# Degree Programs

## Bachelor Programs

- ◇ All the bachelor programs taught in Chinese in Nantong University are open to international students for application. For more details of programs, please visit: <http://web.ntu.edu.cn/zsbgs/zyjs/zyjs.html>

Discipline	Duration (Year)	Language of Instruction	Tuition Fee (CNY)
Medicine	4 or 5	Chinese	26000/Year
Humanities and Sciences	4		16000/Year
Art	4		20000/Year

### ◇ English-taught Bachelor Programs

School Name	Program Name	Duration (Year)	Tuition Fee (CNY)
School of Medicine (School of Nursing)	Clinical Medicine (MBBS)	6	26000/Year
	Dentistry and Surgery	5	26000/Year
	Nursing	4	24000/Year
School of Economics and Management	International Economics and Trade	4	16000/Year
School of Sports Science	Physical Education	4	16000/Year
School of Mechanical Engineering	Mechanical Engineering	4	16000/Year
School of Pharmacy	Pharmacy	4	22000/Year

### ◇ Upgrade Programs from Junior College Education to Undergraduate Education

International students graduating from 3-year junior college can apply for the undergraduate study from the third year of the relevant program at Nantong University. After 2-year undergraduate study, the students can be awarded the bachelor degree if they meet all the graduation requirements according to Measures for Conferment of Bachelor's Degree for International Students of Nantong University.



## 2019 RECRUITMENT BROCHURE FOR INTERNATIONAL STUDENTS

### Scholarship

#### • Jiangsu Provincial Government Scholarship

Type: **full scholarship** covering tuition fee, accommodation, insurance and monthly stipend;  
**partial scholarship** (30,000 CNY for one time)

Application time: from **January to May**

Online application: <http://www.studyinjiangsu.org/lxjs/>

#### • Nantong University scholarship

Type: **partial scholarship** covering tuition fee (programs of International Economics and Trade, Dentistry and Surgery, Nursing and Physical Education taught in English have priority of the scholarship).

Application time: from **March to June**

Online application: <https://ntu.17gz.org/member/login.do>



# Non-degree Programs

## Bridging Course

NTU provides non-credit bridging courses for bachelor program applicants. Within one academic year of bridging courses, students will study Chinese language, Chinese culture, intercultural communication, and English (a compulsory course for students applying for English-taught programs). Besides, students will learn mathematics, physics, chemistry, biology and computer as elective courses according to their bachelor programs (please refer to the Appendix for more application details).



## Language Training Programs

Program		Duration	Intake		Tuition Fee (CNY)
Chinese	Primary Chinese (level 1-3)	One Semester	Spring Semester (Early March)	Autumn Semester (Early September)	8000/Semester
	Intermediate Chinese (level 1-3)				
	Advanced Chinese (level 1-2)				
Business Chinese	Level 1-4				
Customized Programs		Customized programs are available based on different needs			

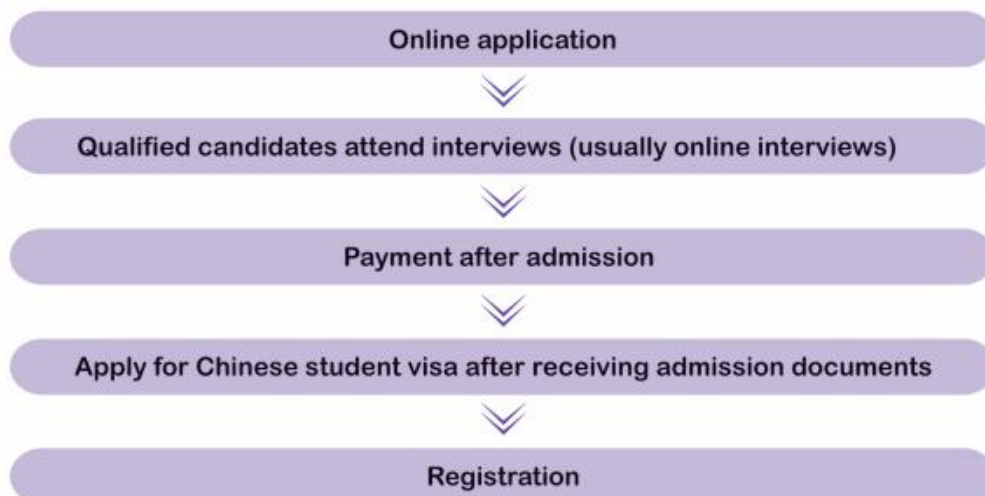
## Exchange Programs

NTU welcome exchange students from our partner universities all around the world. All the programs of NTU are open to exchange students. We can also customize professional courses, lectures, internships, Chinese language and Chinese culture courses according to different needs.



# Application

## Application Procedures



## Application Requirements

- ◇ Have good knowledge and friendly attitude towards China, abide by laws and regulations with no criminal record;
- ◇ Have good health and comply with the provisions of the Law of the People's Republic of China on Emigration and Immigration Administration;
- ◇ Have good academic performance meeting the enrolment requirements of specific program;
- ◇ Applicants for the bachelor program should have graduated from high school and not exceed 25 years old; applicants for the master program should have obtained a bachelor's degree and not exceed 30 years old; applicants for the PhD program should have obtained a master's degree and not exceed 35 years old, and Applicants for the Chinese language course should be between 18 and 60 years old.

## Application Documents

- ◇ A valid foreign passport or certificate of nationality (If you are in China now, a valid Chinese visa or residence permit is required);
- ◇ Non-criminal record;
- ◇ Health certificate;
- ◇ Formal authorization from the parents if applicants are under the age of 18 and their parents do not reside in China permanently;
- ◇ Notarized diploma or degree and notarized academic transcripts;
- ◇ HSK-4 certificate if applying for the Chinese-taught programs;
- ◇ English proficiency certificate for applicants from non-English speaking countries applying for English-taught programs;
- ◇ Two recommendation letters from applicants' professors within 6 months before the application date and research proposal (both necessary for master or PhD program applicants);
- ◇ Resume of applicants' educational and personal background and supporting documents.

Note: applicants should submit scanning copies of the above documents when applying, and bring original documents for check when coming to register. All the application documents will not be returned, whether you are admitted or not.

# Application

## Instructions on Scholarship Application

- ◇ Meet the admission requirements;
- ◇ The average score in the academic transcript should not be less than 80%;
- ◇ Applicants shall have not received scholarships awarded by the Chinese government and other institutions simultaneously;
- ◇ The right of interpreting scholarship belongs to School of International Education of NTU.

## Fees(CNY)

Category	Application	Insurance	Accommodation	Other Fees
Degree Programs	600	600/ year	Single:6000/half a year Double:2000-3000/half a year Triple: 2000/half a year Quad:1500/half a year	Other fees including but not limited to learning materials, physical examination, visa, etc.
Non-degree Programs	400	300/half a year		

## Application Deadline and Registration Time

Category		Application Deadline	Registration Time
Degree Program	Bachelor's Program Taught in English	End of August	September or October
	Bachelor's Program Taught in Chinese	End of June	September
	Postgraduate Program	End of June	September
Non-degree Program	Bridging Course	End of August	September
	Language Training Program	End of January	March
		End of July	September
	Exchange Program	The date of registration should be decided through consultation between universities.	

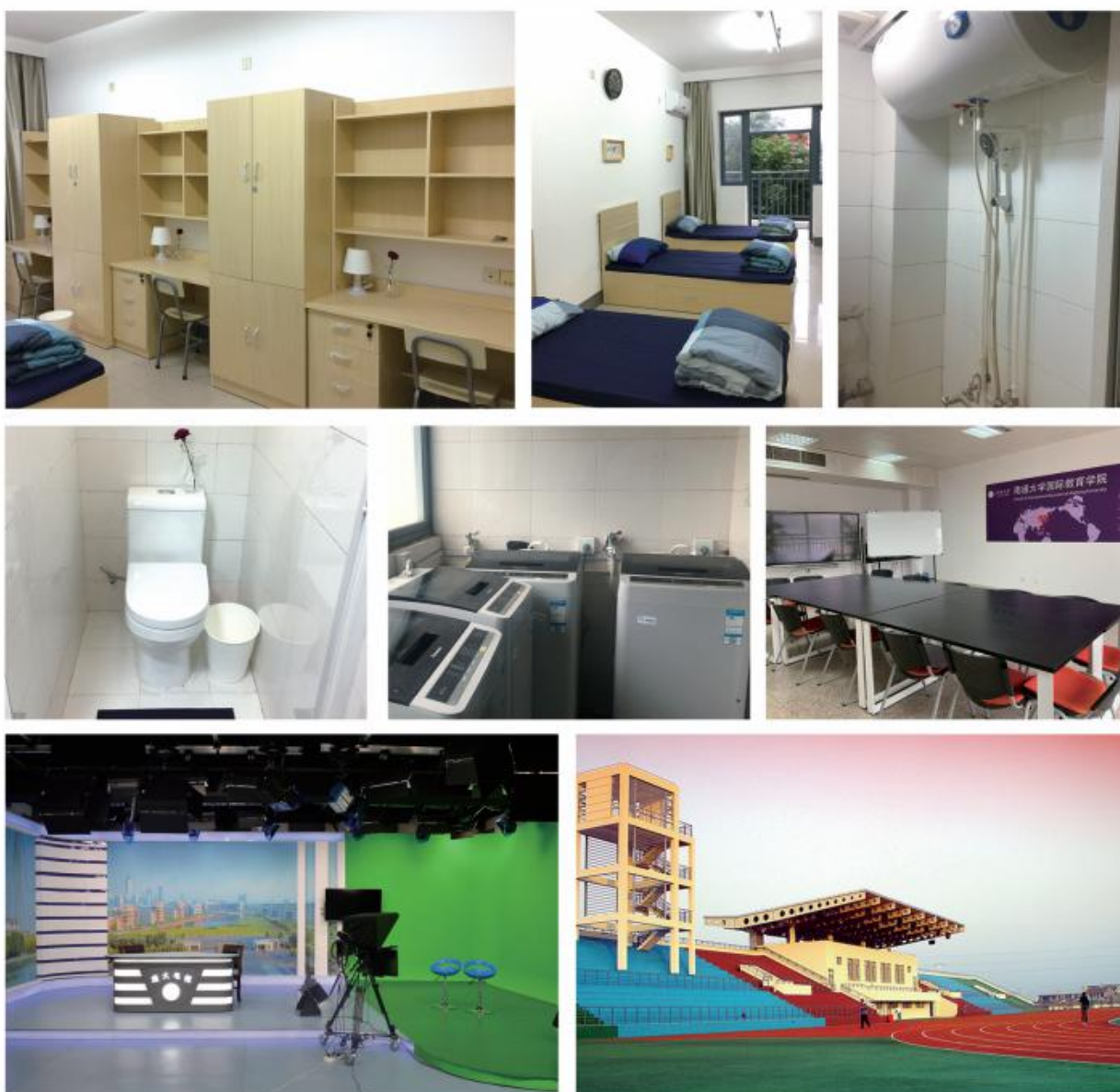


## Dormitory and Campus Facilities

There are cafeterias, supermarkets, cafes, activity centers and clinics for international students, making the campus life easy. Moreover, free shuttle buses between campuses are provided.

Our international dormitory is clean, beautiful and well equipped. In each room, there are toilet, shower, beds, wardrobe, air conditioner, water heater, computer desk and free network, etc. Moreover, there are public laundry, and public kitchens with microwave ovens and refrigerators.

There is entrance guard system and 24-hour watchmen, which can not only ensure the safety of students, but also provide them with assistance and counseling in life at any time.





# Glimpses of Campus



Welcome to join us





## Appendix: Bridging Course

### Introduction

NTU provides non-credit bridging courses for undergraduates. Within one academic year of bridging courses, students will study Chinese language, Chinese culture, intercultural communication, and English (a compulsory course for students applying for English-taught programs). Besides, students will learn mathematics, physics, chemistry, biology and computer as elective courses according to their undergraduate programs.

### Application Requirements

- ◇ Have good knowledge and friendly attitude towards China, abide by laws and regulations with no criminal record;
- ◇ Have good health and comply with the provisions of the Law of the People's Republic of China on Emigration and immigration administration;
- ◇ Graduate from high school and pass all the examinations;
- ◇ Be no more than 24 years old.

### Duration

One academic year (September, 2019-June, 2020)

### Fees (CNY)

Tuition	Application	Insurance	Other Fees	Accommodation
4200/year	400/year	600/ year	Learning materials: 800/ year Physical examination:360/ year Visa/residence permit: 400-800/ year	Single :6000/half a year Double:2000-3000/half a year Triple:2000/half a year Quad:1500/half a year
In total: about 6800/year				

### Application Documents

- ◇ A valid foreign passport or certificate of nationality (if you are in China now, a valid Chinese visa or residence permit is required);
- ◇ Non-criminal record;
- ◇ Health certificate;
- ◇ Formal authorization from the parents if applicants are under the age of 18 and their parents do not reside in China permanently;
- ◇ Notarized high school diploma and notarized academic transcripts;
- ◇ Resume for educational and personal background and supporting documents.

### Others

◇ After one year's bridging course, students applying for Chinese-taught bachelor programs should have reached level 4 or above of Chinese Language Proficiency Scales for Speakers of Other Language. Those who fail to do so will be delayed in their bachelor program studies.

◇ After the completion of bridging course, students are required to pass the examinations organized by NTU and then start the bachelor programs. Those who fail the examinations shall be delayed the bachelor program study until they pass the examinations.

## Welcome to join us

School of International Education, Nantong University

Address: No.19 Qixiu Road, Chongchuan District, Nantong, Jiangsu Province 226001, China

Tel: +86-513-85051869 Fax: +86-513-85051869

E-mail: [admission@ntu.edu.cn](mailto:admission@ntu.edu.cn) Web page: <http://sie.ntu.edu.cn>

Online application: <https://ntu.17gz.org/member/login.do>

